

**OCT<sup>PLUS</sup>**  
**SPECTRALIS<sup>®</sup>**

# FLEXIBLE



- Simultaneous dual-beam scanning for multi-modality imaging
  - Spectral-Domain OCT (SD-OCT)
  - BluePeak™ – Blue Laser Autofluorescence for metabolic mapping (optional)
  - High resolution infrared laser fundus imaging
- Upgradeable to SPECTRALIS HRA+OCT combination system
- TruTrack™ Active Eye Tracking
- AutoRescan™ for precise follow-up exams
- Smallest measurable change of 1  $\mu\text{m}$ \*
- Heidelberg Noise Reduction™ technology
- Automatic Real Time (ART) image stabilization
- 40,000 A-scans per second
- Peripheral OCT imaging and fundus widefield imaging

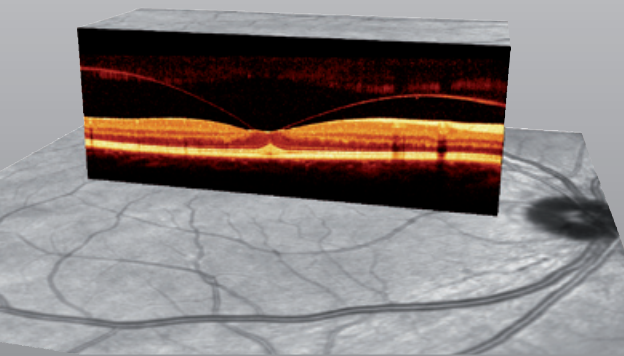


**HEIDELBERG**  
**ENGINEERING**

\* Wolf-Schnurrbusch et al. Invest Ophthalmol Vis Sci 2009; 50:3432-3437. Smallest Measurable Change is Central Retina Thickness multiplied by Coefficient of Variation. Results rounded to the nearest micron.

# OCT PLUS SPECTRALIS®

## Tracking Laser Tomography



**SPECTRALIS OCT PLUS – multi-modality imaging.** SPECTRALIS is the fusion of confocal scanning laser fundus imaging and Spectral-Domain OCT. This dual-beam system uses the fundus image to actively guide the OCT scan in real-time creating a new type of imaging modality: *Tracking Laser Tomography.*

The **SPECTRALIS OCT PLUS** model combines high-resolution SD-OCT with comprehensive infrared fundus imaging. The flexible camera head makes this system easy to use and suitable for widefield fundus imaging and peripheral OCT scanning. The BluePeak enabled version adds blue laser autofluorescence to provide insight into the health of the RPE/Photoreceptor complex non-invasively without the need to inject any dye.

SPECTRALIS OCT PLUS is upgradeable to the SPECTRALIS HRA+OCT combination system with up to six imaging modes in one device. This option makes SPECTRALIS OCT PLUS a flexible and safe investment that can grow with your practice.

### Technical Benefits

#### Multi-Modality Imaging Platform

- SD-OCT
- BluePeak™ – Blue Laser Autofluorescence\*
- Infrared cSLO

#### Safe Investment for Growing Business

- Upgradeable to SPECTRALIS HRA+OCT combination system

#### Reliable OCT Scans

- 40,000 A-scans / second
- TruTrack™ Active Eye Tracking
- Simultaneous SD-OCT and cSLO imaging
- AutoRescan™

#### High-Contrast Diagnostic OCT Images

- Heidelberg Noise Reduction™
- Automatic Real Time (ART)
- 3.9 µm axial resolution (digital)
- 14 µm transverse resolution
- Up to 1,536 A-scans / B-scan
- Scan depth 1.9 mm

#### High-Quality Fundus Images

- Confocal scanning laser ophthalmoscope (cSLO)
- Simultaneous imaging
- Variable field of view (up to 30°x30°)
- 5 µm / 11 µm isotropic resolution (High Resolution / High Speed Mode)

#### Widefield Imaging

- 55° widefield lens\*
- ART widefield composite images (up to 165°)

\*optional



**HEIDELBERG  
ENGINEERING**

**Headquarters**  
Heidelberg Engineering GmbH  
Tiergartenstr. 15  
69121 Heidelberg · Germany  
Tel. +49 6221 6463-0 · Fax +49 6221 646362  
www.HeidelbergEngineering.com

**USA**  
Heidelberg Engineering, Inc.  
1499 Poinsettia Avenue, Suite 160  
Vista, CA 92081  
Tel. +1 760-598-3770 · Fax +1 760-598-3060  
www.HeidelbergEngineering.com